



Ravel
Le Tombeau de Couperin

This image shows a page of musical notation for the piece 'Le Tombeau de Couperin' by Maurice Ravel. The score is written for a single melodic line in treble clef, with a key signature of one sharp (F#) and a time signature of 12/8. The piece is marked 'Solo' and begins with a dynamic of *pp* (pianissimo). The notation includes various rhythmic patterns, such as eighth and sixteenth notes, and rests. There are several measures marked with boxed numbers: 4, 7, 10, and 13. The dynamics change throughout the piece, including *pp*, *pr* (pianissimo), *mp* (mezzo-piano), and *p* (piano). The score concludes with a double bar line and repeat signs.

A. Bruckner

Sümfoonia nr 5 B-duur, II osa

Oboe 1

Bruckner — Symphony No. 5 in Bb Major

Oboe 1

5

2. SATZ. ADAGIO

Sehr langsam

Viol. I pizz pp

Solo p dolce

mf p dolce cresc.

mf pp p dolce cresc.

10



Rossini
La scala di seta

8 *p dolce*

9 *p* *mp*

15 *ad lib.*

18 [∞] *Allegro*

37 [$\text{♩} = 144$] *p*

41

45

50

The image displays a musical score for the piece 'La scala di seta' by Rossini. It consists of eight staves of music, each beginning with a measure number in a box. The notation is in treble clef with a common time signature. The first staff (measure 8) is marked 'p dolce' and features a long, flowing melodic line with many slurs. The second staff (measure 9) is marked 'p' and 'mp', showing a more rhythmic passage with some rests. The third staff (measure 15) is marked 'ad lib.' and contains a complex, fast-moving melodic line with many slurs and ornaments. The fourth staff (measure 18) is marked 'Allegro' and includes a repeat sign with a double bar line and a fermata. The fifth staff (measure 37) is marked 'p' and includes a tempo marking '[♩ = 144]'. The sixth staff (measure 41) continues the fast melodic line. The seventh staff (measure 45) also continues the fast melodic line. The eighth staff (measure 50) concludes the piece with a final melodic phrase.

R. Strauss

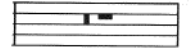
Don Juan

Oboe 1

L a tempo ma tranquillo

$\text{♩} = 76$

3



4

1. Oboe

235 Solo
p sehr getragen und ausdrucksvoll

244 **M**
p con espr.

256
cresc. - - - - - dim.

267 **6**
- *pp* molto espr.

282 poco cal. a tempo
1 2
molto dim. *ppp* espr.

294 **N** molto tranquillo
4
dim.



Tchaikovsky
Symphony No. 4 in F minor, Op. 36: *movt. II*

Andantino in modo di canzona

Solo

p semplice, ma grazioso

9

18